



Table of Contents

1. Introduction	3
2. Literature Review	5
3. Methodology	6
4. Results	—
5. Discussion	—
6. Conclusion	—
7. References	—



Lab 1 U 1 de

Dq a C ec Me d g

T e C a ge Hea ca è 2021 Lab 1 O de g U 1 de

3.4
2021).

84,

Ordering: What's the Order?

“I will study by myself”
“I will study by myself”. A
“I will study by myself”



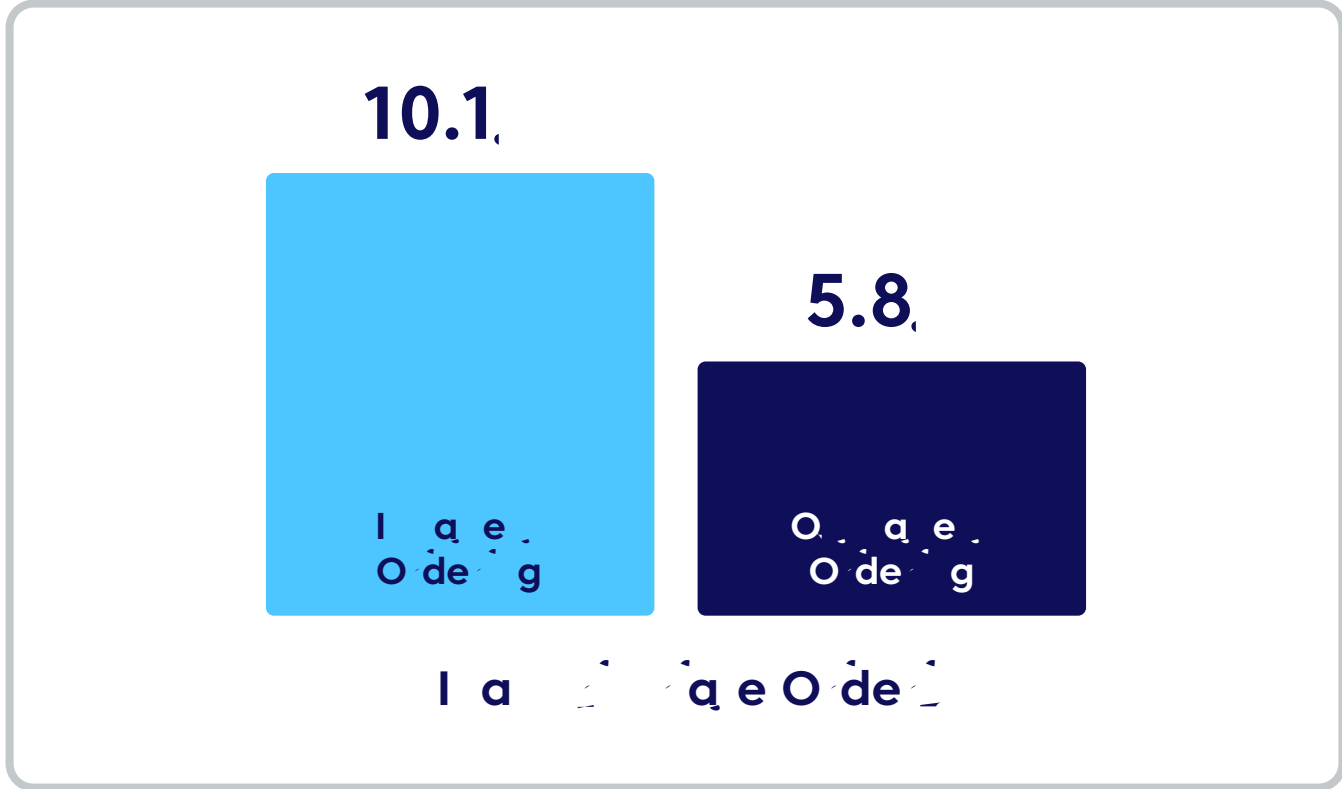
Lab à Ode g Tè d



La Odeig A 2 Mela qe Ta Ode

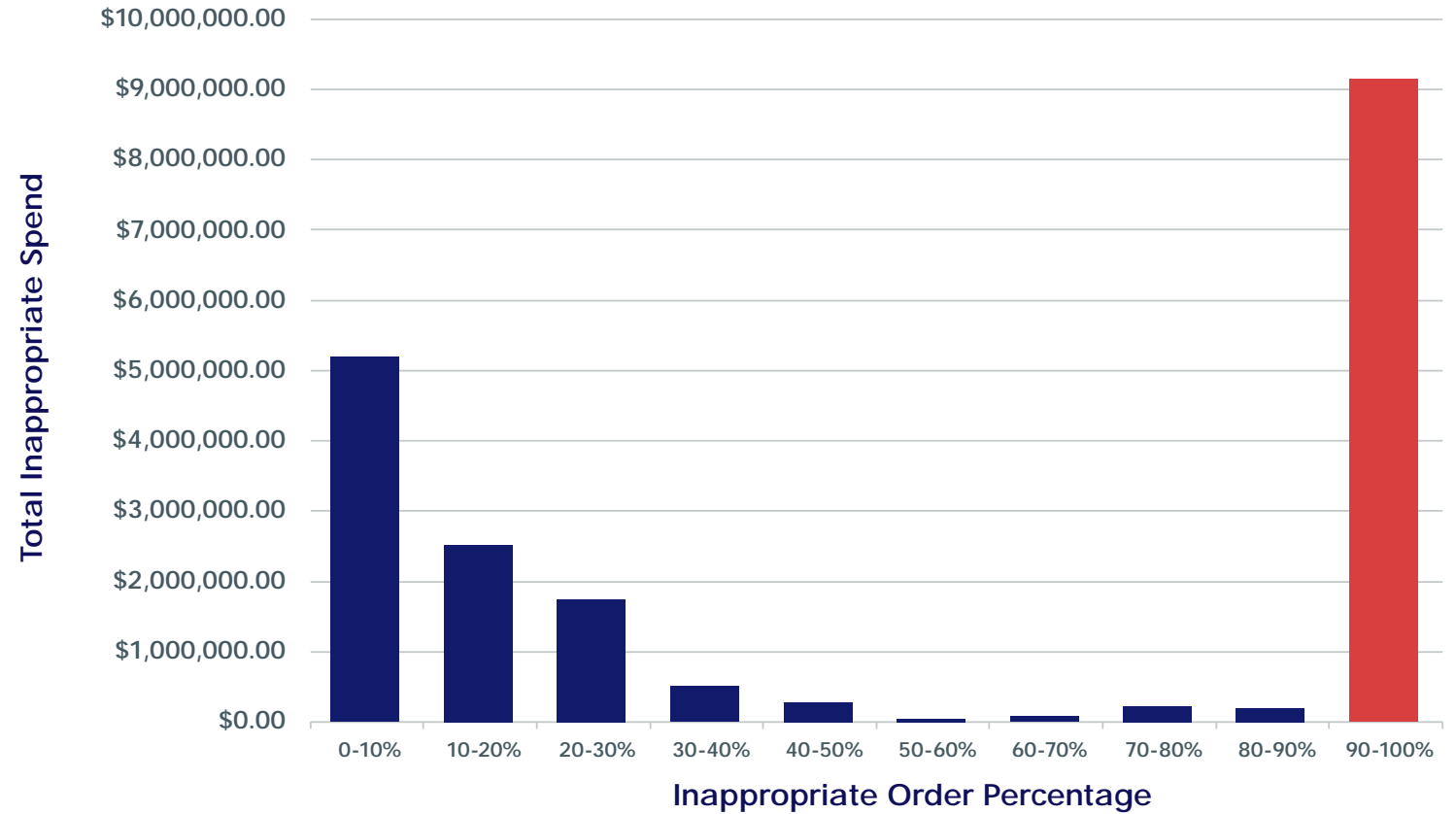


1. 10.1
2. 5.8
3. 10.1
4. 5.8
5. 10.1
6. 5.8
7. 10.1
8. 5.8
9. 10.1
10. 5.8
11. 10.1
12. 5.8
13. 10.1
14. 5.8
15. 10.1
16. 5.8
17. 10.1
18. 5.8
19. 10.1
20. 5.8
21. 10.1
22. 5.8
23. 10.1
24. 5.8
25. 10.1
26. 5.8
27. 10.1
28. 5.8
29. 10.1
30. 5.8
31. 10.1
32. 5.8
33. 10.1
34. 5.8
35. 10.1
36. 5.8
37. 10.1
38. 5.8
39. 10.1
40. 5.8
41. 10.1
42. 5.8
43. 10.1
44. 5.8
45. 10.1
46. 5.8
47. 10.1
48. 5.8
49. 10.1
50. 5.8





Current Value of Order Drive Over 45% of U.S. Spend



Hg = the Order Drive Over 47, f U ece_a S e d

30. y = 11
47. y = 11
() 0.7 () □□

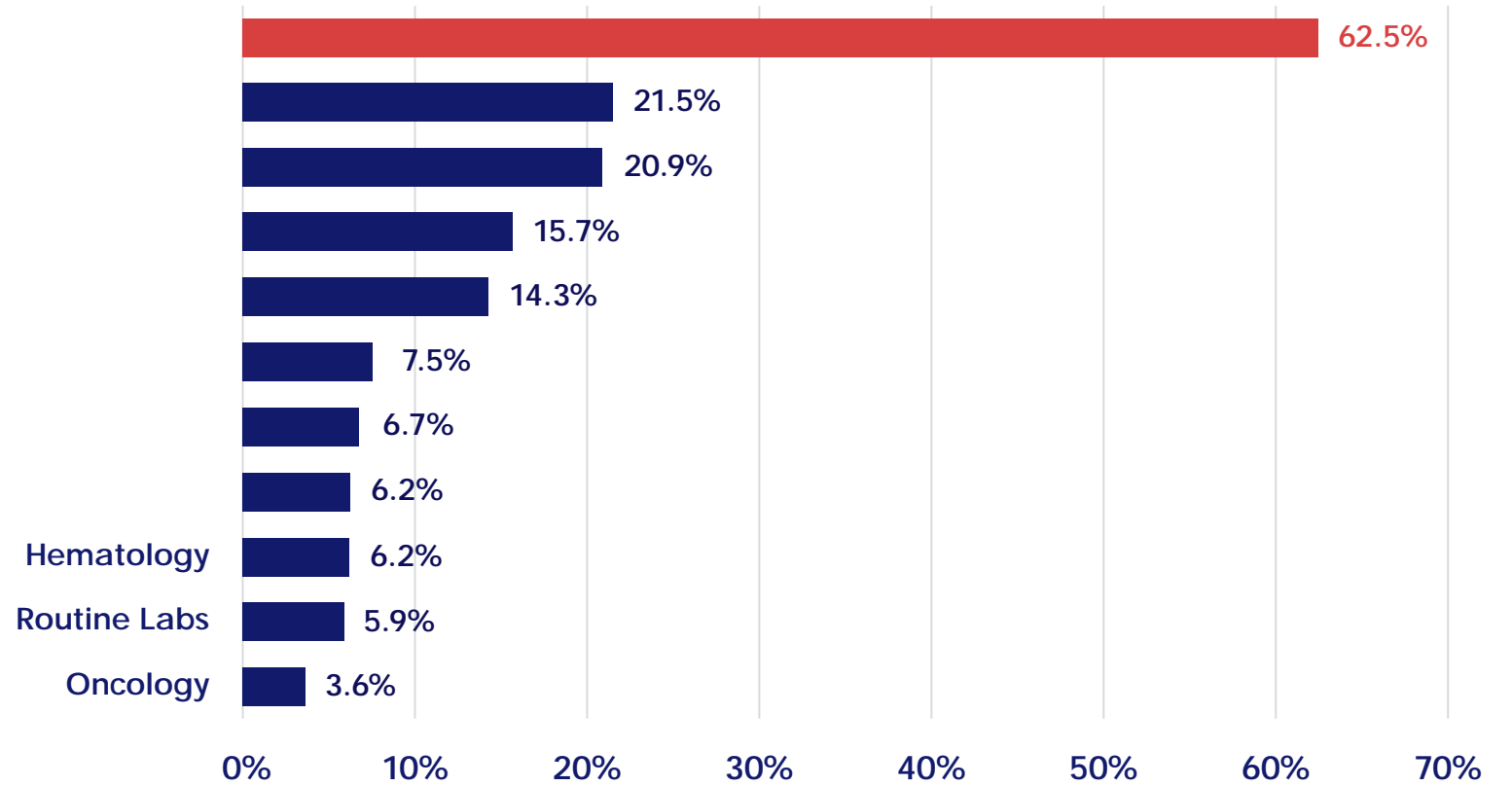
O de y aced
 a y e be ee
 7.5, a d 10, f, e
 e d ve ve 14, f
 ece_a e d.



Success of
the Order of
the U.S. Army
is the result of
the U.S. Army
and the U.S. Army
and the U.S. Army

W e e D e l a q e O d e g O g a e ?

1
2
3
4
5
6
7
8
9
10
11
12
13
14
15
16
17
18
19
20
21
22
23
24
25
26
27
28
29
30
31
32
33
34
35
36
37
38
39
40
41
42
43
44
45
46
47
48
49
50
51
52
53
54
55
56
57
58
59
60
61
62
63
64
65
66
67
68
69
70
71
72
73
74
75
76
77
78
79
80
81
82
83
84
85
86
87
88
89
90
91
92
93
94
95
96
97
98
99
100



H D We Ide f O e f i ve e ?

W e e D e U e c e _ a S e d O g a e ?

() 4 B (-) 12 () - 225 () 0.00 0.00 0 - 1.312 - 87.9 10.7 51.5 () 13.3 () 17.9 () - 23.4 () - 17.0
() 0.00 20.00 0 - 1.312 () () 20.3 () 20.3 (- 2398 (- 2398) - 17.0 () 5.0 () 5) 8.7 -
22.1 () 0.00 0.00 0 - 1.312 () - 4.1 () - 532 () - 4.8 () 17.0 () 5.0 () 1.2 () - 23.4 () 5.0 () 0.5 ()

2.1 .

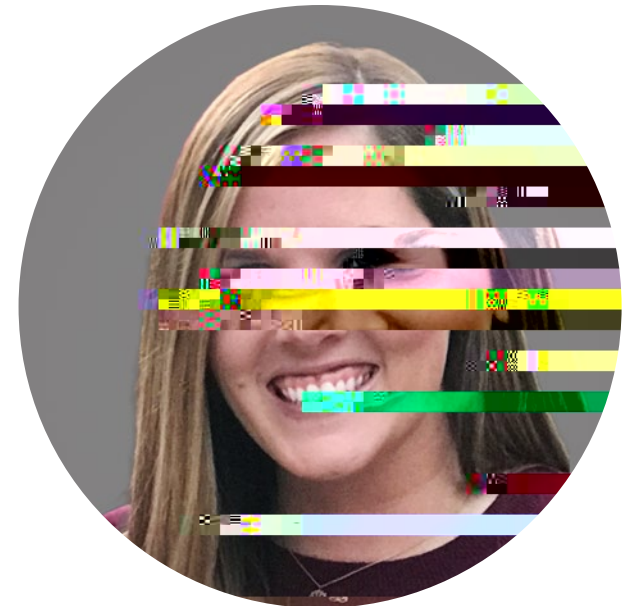
5173
(2

n.y

F c _ O de _ T a D _ _ _ _ a A eç O _ c _ e _

Red c g a _ _ a e ab a _ _ de g beg _ _
de a d g _ _ e e a _ _ a e de g _ _
e _ _ cc , b _ _ e e _ _ ed ç _ _ c e q e _ e
g e a e _ _ aç . Ide f g de _ _ a a e _ _ e aced
a _ _ a e _ _ a g d a , b _ _ a _ _ ca _ _ be ab e
de f _ _ de g a e _ _ a ca d _ _ _ a a eç
c ca , e a _ _ a , a d _ _ a ca _ _ c _ e .

Ca _ _ e Leb _ c e _

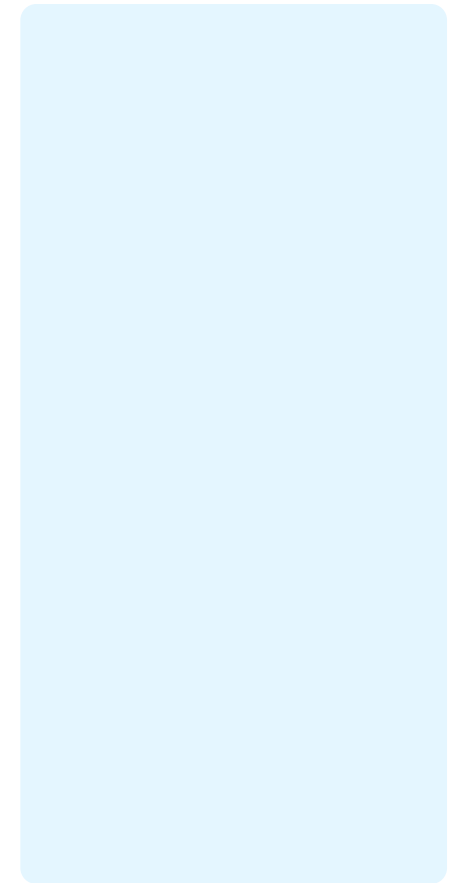


T e l a c f Re e ve O de g



Redução da Lab_He - I - ve_e Q_a - f Ca'é

10/11/2011



F c O de a Ma e e O I ve Ca e

Da ab a e c a g v e f a e
ab a e g a e a e a ed ac
a e c e. Red c g ab e e d c a ge
b e e ç ve a ag g da ab e e ad c
e a e a f ca e e
ed c g f a-ac ed a e a.

Rac ae H e

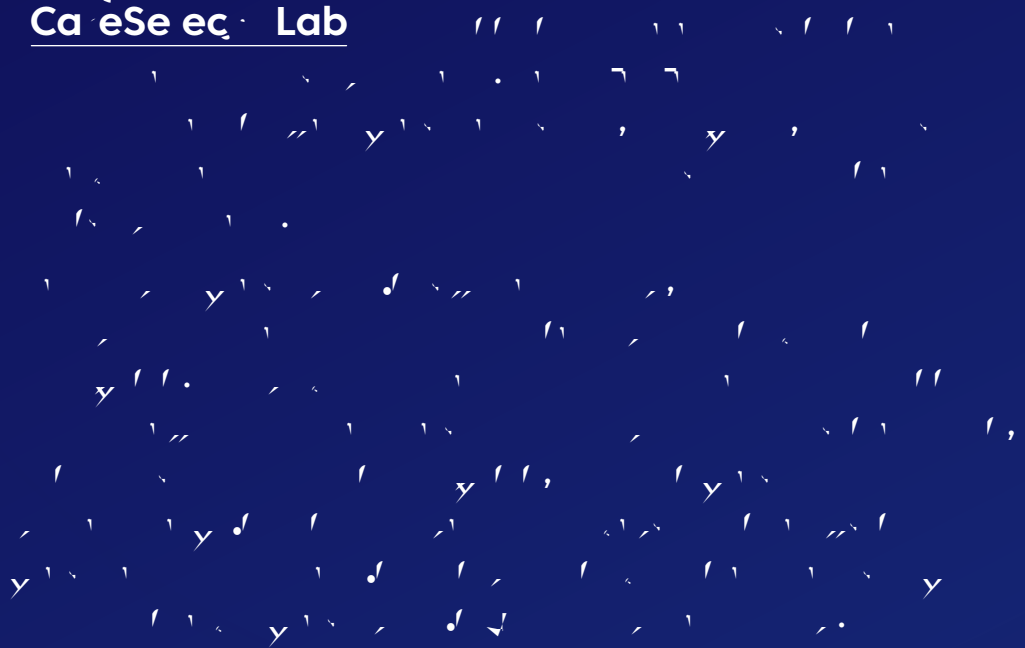


-B

Rec e da

H We Ca He

Ca eSe ec Lab



Lea M e
Ab Ca eSe ec Lab

Re e Y Pe a ed
Lab a Sa g A a

